



# IECEX Certificate of Conformity

## INTERNATIONAL ELECTROTECHNICAL COMMISSION IEC Certification System for Explosive Atmospheres

for rules and details of the IECEx Scheme visit [www.iecex.com](http://www.iecex.com)

Certificate No.: **IECEX UL 20.0120X** Page 1 of 4 [Certificate history:](#)  
Issue 0 (2020-12-10)

Status: **Current** Issue No: 1

Date of Issue: 2022-07-22

Applicant: **Clark-Reliance LLC**  
16633 Foltz Pkwy  
Strongsville, OH 44149  
United States of America

Equipment: **Snap Action Magnetic Level Switches, SAS-16 Series, Part Nos. A25669-CE, A25669-CE-T, A26617-CE, A26617-CE-T, A26044-CE, A26044-CE-T, A26044-CE-GC, and A26044-CE-GC-T**

Optional accessory:

Type of Protection: **Flameproof "db"**

Marking: Ex db IIC T6...T1 Gb  
-20°C to +40°C

Approved for issue on behalf of the IECEx  
Certification Body:

**Katy A. Holdredge**

Position:

**Senior Staff Engineer**

Signature:  
(for printed version)

Date:  
(for printed version)

2022-07-22

1. This certificate and schedule may only be reproduced in full.
2. This certificate is not transferable and remains the property of the issuing body.
3. The Status and authenticity of this certificate may be verified by visiting [www.iecex.com](http://www.iecex.com) or use of this QR Code.



Certificate issued by:

**UL LLC**  
333 Pfingsten Road  
Northbrook IL 60062-2096  
United States of America





# IECEX Certificate of Conformity

Certificate No.: **IECEX UL 20.0120X**

Page 2 of 4

Date of issue: 2022-07-22

Issue No: 1

Manufacturer: **Clark-Reliance LLC**  
16633 Foltz Pkwy  
Strongsville, OH 44149  
**United States of America**

Manufacturing locations: **Clark-Reliance LLC**  
16633 Foltz Pkwy  
Strongsville, OH 44149  
**United States of America**

This certificate is issued as verification that a sample(s), representative of production, was assessed and tested and found to comply with the IEC Standard list below and that the manufacturer's quality system, relating to the Ex products covered by this certificate, was assessed and found to comply with the IECEX Quality system requirements. This certificate is granted subject to the conditions as set out in IECEX Scheme Rules, IECEX 02 and Operational Documents as amended

## STANDARDS :

The equipment and any acceptable variations to it specified in the schedule of this certificate and the identified documents, was found to comply with the following standards

[IEC 60079-0:2017](#) Explosive atmospheres - Part 0: Equipment - General requirements  
Edition:7.0

[IEC 60079-1:2014-06](#) Explosive atmospheres - Part 1: Equipment protection by flameproof enclosures "d"  
Edition:7.0

This Certificate **does not** indicate compliance with safety and performance requirements other than those expressly included in the Standards listed above.

## TEST & ASSESSMENT REPORTS:

A sample(s) of the equipment listed has successfully met the examination and test requirements as recorded in:

Test Reports:

[US/UL/ExTR20.0136/00](#)

[US/UL/ExTR20.0136/01](#)

Quality Assessment Report:

[GB/ITS/QAR11.0005/07](#)



# IECEX Certificate of Conformity

Certificate No.: **IECEX UL 20.0120X**

Page 3 of 4

Date of issue: 2022-07-22

Issue No: 1

## EQUIPMENT:

Equipment and systems covered by this Certificate are as follows:

The SAS-16 Snap Action Magnetic Level Switches (Part Nos. A26617-CE-#, A25669-CE-#, and A26044-CE-##-#) are designed to operate as a point level switch for magnetic liquid level gauges. The switch may or may not have gold contacts. The switch enclosure can be comprised of aluminum alloy or stainless steel. Some Part Numbers utilize an Ex db IIC certified sealing fitting, Ex db IIC certified threaded pipe nipple, and Ex db IIC component certified flameproof enclosure to house a terminal block. Two Ex db IIC certified enclosure options are utilized. The aluminum enclosure option has two threaded entries, one used for connection to the remainder of the SAS-16 assembly, the other for connection in end-use. The stainless steel enclosure option has 3 threaded entries, two of which serve the same functions as with the aluminum option, with the third completed with a factory-installed Ex db IIC certified blanking element.

**Please see Annex for additional information.**

## SPECIFIC CONDITIONS OF USE: YES as shown below:

- Contact the manufacturer for dimensions and information on flameproof joints.
- The supply entry of models A25569-CE-# and A26617-CE-# shall be completed with an approved Ex db IIC sealing fitting within 12 mm of the enclosure. The supply entry of models A26044-CE-##-# shall be completed with an approved Ex db IIC sealing fitting within 19mm of the enclosure.
- Only one thread adapter shall be used with each threaded entry on the associated equipment.
- Models A26617-CE-# and A25569-CE-# must be connected to an Ex Terminal enclosure suitably rated for the same Ex db IIC atmosphere as the switches themselves. The terminal enclosure must be provided with an internal protective earthing connection. The connection to the attached terminal enclosure must be via metallic fittings which ensure continuity or earth bonding, and are similarly rated for the intended use. If continuity is not maintained between the switch enclosure and the attached terminal enclosure's grounding path, then the external earth bonding terminal shall be used to provide continuity to the attached terminal enclosure. The external bonding facility may also be used as per the local code installation requirements. The flying leads shall be terminated internal to an enclosure suitable for the location of installation.
- Use damp cloth for cleaning to avoid electric charging hazard.
- The following table details the relationship between process temperature and temperature code:

Temperature Code	Process Temperature
T6	-50°C to +80°C
T5	-50°C to +95°C
T4	-50°C to +130°C
T3	-50°C to +195°C
T2	-50°C to +295°C
T1	-50°C to +400°C



# IECEX Certificate of Conformity

Certificate No.: **IECEX UL 20.0120X**

Page 4 of 4

Date of issue: 2022-07-22

Issue No: 1

**DETAILS OF CERTIFICATE CHANGES (for issues 1 and above)**

Issue 1: Alternate Constructions for the A26044-CE and A26044-CE-GC models. Updated applicant and manufacturer name.

**Annex:**

[Annex to IECEx UL 20.0120X Issue 1.pdf](#)



# IECEx Certificate of Conformity

Certificate No.: IECEx UL 20.0120X

Issue No.: 1

Page 1 of 5

## TYPE DESIGNATION

Nomenclature:

- A25669-CE: Model SAS-16 snap action magnetic level switch, 6061-T6 Aluminum Enclosure.
- A25669-CE-T: Model SAS-16 snap action magnetic level switch, 316 Stainless Steel Enclosure.
- A26044-CE: Identical construction to the A25669-CE but is mechanically secured to an Ex db IIC threaded pipe nipple, Ex db IIC sealing fitting, and an Ex db IIC Ex Flameproof Enclosure housing a terminal block.
- A26044-CE-T: Identical construction to the A25669-CE-T but is mechanically secured to an Ex db IIC threaded pipe nipple, Ex db IIC sealing fitting, and an Ex db IIC Ex Flameproof Enclosure housing a terminal block.
- A26617-CE: Model SAS-16 snap action magnetic level switch, 6061-T6 Aluminum Enclosure. Internal switch features gold contacts.
- A26617-CE-T: Model SAS-16 snap action magnetic level switch, 316 Stainless Steel Enclosure. Internal switch features gold contacts.
- A26044-CE-GC: Identical construction to the A26617-CE but is mechanically secured to an Ex db IIC threaded pipe nipple, Ex db IIC sealing fitting, and an Ex db IIC Ex Flameproof Enclosure housing a terminal block.
- A26044-CE-GC-T: Identical construction to the A26617-CE-T but is mechanically secured to an Ex db IIC threaded pipe nipple, Ex db IIC sealing fitting, and an Ex db IIC Ex Flameproof Enclosure housing a terminal block.

## PARAMETERS RELATING TO THE SAFETY

Part no. A25669-CE, A25669-CE-T, A26044-CE, A26044-CE-T:

300 Vac, 10A, 2000VA; 240 Vdc, 10A, 50W (maximum)

Part No. A26617-CE, A26617-CE-T, A26044-CE-GC, A26044-CE-GC-T:

240 Vac, 0.25A, 6 VA; 240Vdc, 0.25A, 3.6W (maximum)

## MARKING

Marking has to be readable and indelible; it has to include the following indications:





# IECEX Certificate of Conformity

Certificate No.: IECEX UL 20.0120X



Issue No.: 1

Page 2 of 5

A25669-CE:

<b>SAS-16™</b>		<b>JERGUSON®</b> A PRODUCT OF CLARK-RELIANCE	
<p>WARNING: DO NOT OPEN WHEN EXPLOSIVE ATMOSPHERE IS PRESENT.          CONDUIT RUNS MUST HAVE SEALING FITTING WITHIN 12mm (0.47") OF ENCLOSURE. 1/2" NPT ENCLOSURE CONNECTION          SEE CONTROL DRAWING CI-SAS-16-EX FOR FULL INSTALLATION AND PRODUCT WARNING INFORMATION.          SAS-16 MAG II ALARM SWITCH: PART #: (SEE TABLE 1)          MAX AC RATINGS: 300VAC, 10A, 2000VA          MAX DC RATINGS: 240VDC, 10A, 50W</p>			
SN: <input type="text"/>		MFG. DATE: <input type="text"/>	
  II 2 G Ex db IIC T6...T1 Gb X UL 20 ATEX 2448X		IECEx: Ex db IIC T6...T1 Gb X IECEX UL 20.0120X	
2575 Mfg. by Clark-Reliance LLC; Strongsville, Ohio 44149 USA; +1 (440) 572-1500; www.clarkreliance.com			

A26617-CE:

<b>SAS-16™</b>		<b>JERGUSON®</b> A PRODUCT OF CLARK-RELIANCE	
<p>WARNING: DO NOT OPEN WHEN EXPLOSIVE ATMOSPHERE IS PRESENT.          CONDUIT RUNS MUST HAVE SEALING FITTING WITHIN 12mm (0.47") OF ENCLOSURE. 1/2" NPT ENCLOSURE CONNECTION          SEE CONTROL DRAWING CI-SAS-16-EX FOR FULL INSTALLATION AND PRODUCT WARNING INFORMATION.          SAS-16 MAG II ALARM SWITCH: PART #: (SEE TABLE 1)          MAX AC RATINGS: 240VAC, 1/4A, 6VA          MAX DC RATINGS: 240VDC, 1/4A, 3.6W</p>			
SN: <input type="text"/>		MFG. DATE: <input type="text"/>	
  II 2 G Ex db IIC T6...T1 Gb X UL 20 ATEX 2448X		IECEx: Ex db IIC T6...T1 Gb X IECEX UL 20.0120X	
2575 Mfg. by Clark-Reliance LLC; Strongsville, Ohio 44149 USA; +1 (440) 572-1500; www.clarkreliance.com			



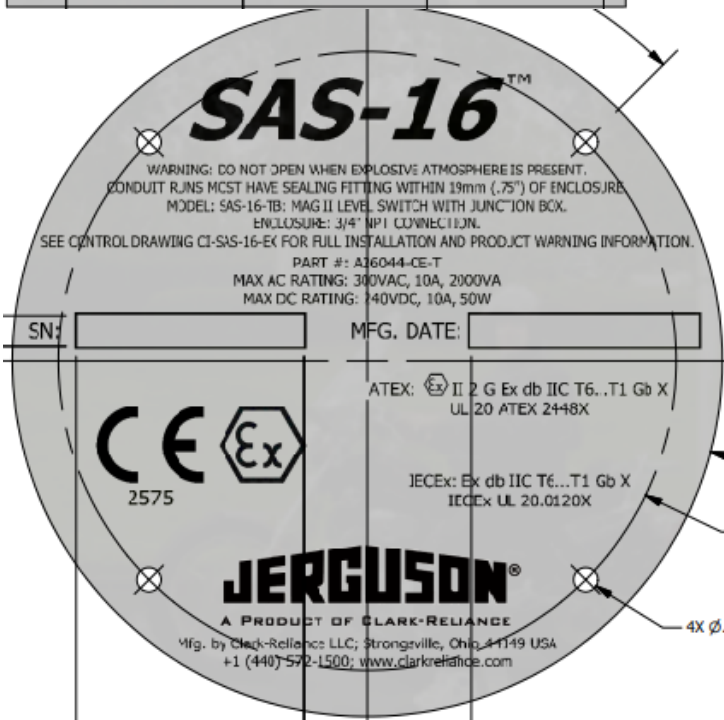
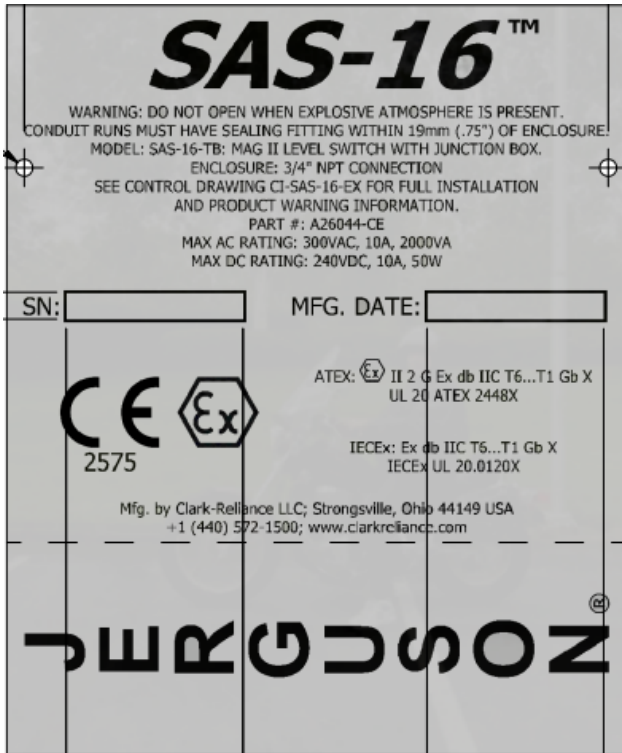
# IECEX Certificate of Conformity

Certificate No.: IECEx UL 20.0120X

Issue No.: 1

Page 3 of 5

A26044-CE:





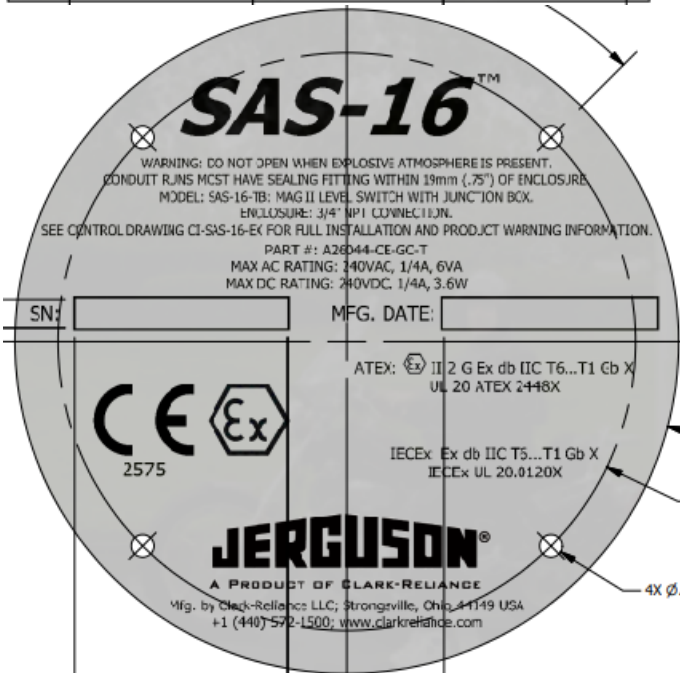
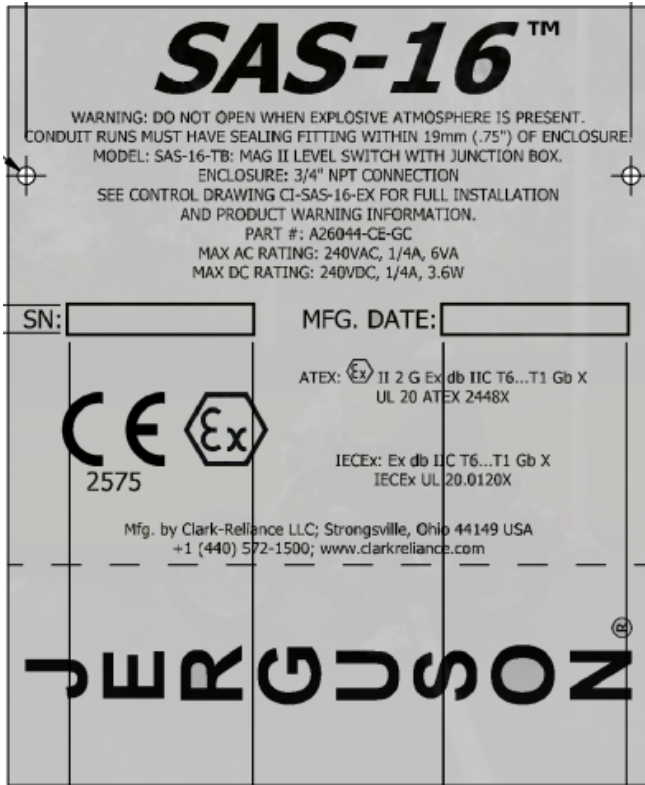
# IECEX Certificate of Conformity

Certificate No.: IECEx UL 20.0120X

Issue No.: 1

Page 4 of 5

A26044-CE-GC:







# IECEX Certificate of Conformity

Certificate No.: IECEX UL 20.0120X

Issue No.: 1

Page 5 of 5

## ROUTINE EXAMINATIONS AND TESTS

Each piece of equipment defined above has to have successfully passed; before delivery:

- A routine continuity test must be conducted to confirm the continuity between the SAS-16 Snap Action Magnetic Level Switch and the attached internally grounded Ex db IIC terminal enclosure.

## LIST OF CERTIFIED COMPONENTS

The following additional previous editions of Standards noted under the "Standards" section of this Certificate were applied to integral Components as itemized below. There are no significant safety related changes between these previous editions and the editions noted under the "Standards" section.

Product	Certificate Number	Standards
Ex Component Flameproof Enclosures, Models V20815-E6 and 8092-TT-03.	IECEX SIR 08.0025U	IEC 60079-0, 6 <sup>th</sup> IEC 60079-1, 7 <sup>th</sup>
½" NPT Male-to-Male Adapters, Model AM-D	IECEX SIR 12.0016X	IEC 60079-0, 5 <sup>th</sup> IEC 60079-1, 6 <sup>th</sup>
NPT Sealing Fitting, Model CSB 656N/A/075/050 and CSB656N/A/075/050 NP	IECEX CML 19.0048X	IEC 60079-0: 7 <sup>th</sup> IEC 60079-1: 7 <sup>th</sup>
NPT Sealing Fitting, CR-SBF20/NPET/050NPT/050NPT	IECEX SIR 07.0098X	IEC 60079-0: 6 <sup>th</sup> IEC 60079-1: 7 <sup>th</sup>
Instrument Housings, Models 1080WM 33 and 1080SM 33	IECEX SIR 09.0006U	IEC 60079-0: 7 <sup>th</sup> IEC 60079-1: 7 <sup>th</sup>
½" NPT Male-to-Male Adapters, Model AN-1-EX	IECEX SIR 13.0073U	IEC 60079-0: 7 <sup>th</sup> IEC 60079-1: 7 <sup>th</sup>