

RFQ and Purchase Order Specification Work Sheets

Section: R406.007
Date: 4-30-2020
Supersedes: 11-1-2011
Page 1

P4100 Series Simpliports

REV	DATE	DESCRIPTION	PART STA.	MATERIAL SPEC.	QTY.
1		ROOF MOUNT ASSEMBLY	100-36	STN. STL.	100-36-A
2		MIDDLE CAP	100-36	STN. STL.	100-36-A
3		SEAL SUPPORT	100-36	STN. STL.	100-36-A
4		WIND SHIELD	100-36	STN. STL.	100-36-A
5		SEAL GASKET	100-36	STN. STL.	100-36-A
6		EXPAN. GASKET	100-36	STN. STL.	100-36-A
7		EXPAN. GASKET	100-36	STN. STL.	100-36-A
8		EXPAN. GASKET	100-36	STN. STL.	100-36-A
9		EXPAN. GASKET	100-36	STN. STL.	100-36-A
10		EXPAN. GASKET	100-36	STN. STL.	100-36-A
11		EXPAN. GASKET	100-36	STN. STL.	100-36-A
12		EXPAN. GASKET	100-36	STN. STL.	100-36-A
13		EXPAN. GASKET	100-36	STN. STL.	100-36-A
14		EXPAN. GASKET	100-36	STN. STL.	100-36-A
15		EXPAN. GASKET	100-36	STN. STL.	100-36-A
16		EXPAN. GASKET	100-36	STN. STL.	100-36-A
17		EXPAN. GASKET	100-36	STN. STL.	100-36-A
18		EXPAN. GASKET	100-36	STN. STL.	100-36-A

DIMENSION CHART - STANDARD SIZES										TO BE SPECIFIED BY CUSTOMER	
SIMPLIPORT PART NO.	NO. OF WINDOW UNITS	VISION A	MIN. WATER GAUGE CENTER TO CENTER FOR 50/77 VALVES	BODY D	E	G	G		C	G	
		INCHES	MM	INCHES	MM	INCHES	MM	INCHES	MM		
P4100L	5	10 1/4	(260.3mm)	19 3/8	(479.4mm)	11 7/8	(301.6mm)	12 3/4	(322.9mm)	6 15/16	(176.2mm)
P4100L	6	10 5/8	(269.7mm)	21 1/4	(539.8mm)	14 1/4	(365.0mm)	15 1/4	(391.2mm)	6 1/8	(156.4mm)
P4100L	7	11	(280mm)	23 5/8	(600.1mm)	16 5/8	(428.2mm)	17 1/2	(444.5mm)	9 5/16	(236.4mm)
P4100L	8	12 3/8	(313.3mm)	25	(635.0mm)	19	(482.8mm)	19 7/8	(504.9mm)	12 1/2	(317.5mm)
P4100L	9	13 3/4	(349.1mm)	28 3/8	(725.7mm)	21 3/8	(545.1mm)	22 1/4	(569.9mm)	11 11/16	(296.9mm)
P4100L	10	14 1/2	(368.3mm)	30 3/4	(780.0mm)	23 3/4	(603.5mm)	24 5/8	(625.5mm)	12 7/8	(327.0mm)

NOTES:

- * TO COMPLETE PART NO. ADD NO. OF WINDOW UNITS
- ** ITEMS 2 THRU 10 FORM ONE COMPLETE ASSEMBLY OF SINGLE WINDOW UNIT
- ITEMS 2 THRU 7 COMPRISE A REPLACEMENT PACKAGE INCLUDING THE MODULE. TO BE ORDERED AS PART NO. PW-87B (SEE EXPLODED VIEW)
- ITEMS 8 THRU 10 COMPRISE A PACKING NUT ASSEMBLY. TO BE ORDERED AS PART NO. PW-69 (SEE EXPLODED VIEW)

ITEM	PART NO.	DWG. NO.
SIMPLIPORT ILLUMINATORS		
FLUORESCENT	PLW	B-9131
WEATHERPROOF	PLW	B-9133
LED ILLUMINATOR / EXPROOF	SLW LED	PS72231-A
SINGLE POINT FEATURES		
OPEN-END WEATHERPROOF	PH01W	L-15-82
DIRECT-VISION WEATHERPROOF	PH01V	B-10547
PERISCOPE-WEATHERPROOF	PH01P	B-9133
LED MTRD	SHW LED	PS7231-A

FIGURE A
FOR FLANGE CONNECTION (3000 PSI MAX)

SECTION A-A
EXPLODED VIEW OF SINGLE WINDOW UNIT

PLEASE SELECT ARRANGEMENT REQUIRED

NOTE: FOR ARRANGEMENTS #3 & #4, CONSULT FACTORY FOR MIN. CENTERS

2	9/25/10	UPDATED LOOP & CONNECTOR FOR ILLUMINATION CLEARANCE (PW-29 & PW-28)	ST
REV	DATE	CHANGE	BY

MANUFACTURED BY
Clark-Reliance®
16633 FOLTZ PARKWAY
STRONGSVILLE, OH 44149 USA
PH: 440-572-1500
WEB: www.clark-reliance.com

CLARK-RELIANCE®
SIMPLIPORT P41** SERIES GAGE ASSEMBLY
W/ EXPANSION LOOP & FLANGED CONNECTIONS

PART NUMBER: RP41**
TOLERANCE CLASS (PER PEG-004)
MATERIALS: SEE INDIVIDUAL PART DRAWINGS
REVISION:
DRAWING: CM
CHECKED:
DATE: 4/29/09
DRAWING NO.: PS1491-A
REV: 2

Please complete all information fields in this worksheet and submit with your RFQ (Request For Quote) or Purchase Order. The use of these worksheets has proven to greatly decrease Engineering time and virtually eliminate specification errors.

Reliance®

A PRODUCT OF CLARK-RELIANCE

16633 Foltz Parkway • Strongsville, OH 44149 USA
Telephone: +1 (440) 572-1500
www.clark-reliance.com • RelianceAppEng@clark-reliance.com

Must accompany P.O with all fields completed

Customer: _____
Address: _____
Contact Name: _____
Phone No.: _____
E-mail: _____

Date: _____
P.O. No.: _____
Quote Ref.: _____
On Site Req'd.: _____
Other Info.: _____

REQUIRED INFORMATION

Design Pressure: _____
Design Temperature: _____
Visibility Required: _____
Model No.: _____

Water Gage Valve Connection: ½"-2500 RTJ Flange is standard
Flange Specification (other than standard):
Flange Size: _____
Flange Class _____
Flange Face: _____

P4100 Series: Dimension Chart-Standard Sizes 0-3000 PSI (206 Bar)

Simpliport Model No.	# of Ports	Vision A inches (mm)	Min. Centers B inches (mm)	Body D inches (mm)	Min. G inches (mm)
P4105	5	10.25 (260)	21.63 (549)	11.88 (301)	9.19 (234)
P4106	6	12.62 (320)	24.00 (610)	14.25 (362)	10.38 (264)
P4107	7	15.00 (380)	26.38 (670)	16.62 (422)	11.56 (294)
P4108	8	17.38 (441)	28.75 (730)	19.00 (482)	12.75 (324)
P4109	9	19.75 (501)	31.13 (790)	21.38 (543)	13.94 (354)
P4110	10	22.12 (562)	33.50 (850)	23.75 (603)	15.12 (384)

P4100 Series: Multi-Section Sizes 0-3000 PSI (206 Bar)

P4111	11	25.50 (650)	36.87 (937)	27.12 (688)	16.81 (427)
P4112	12	27.88 (708)	39.25 (997)	29.50 (749)	18.00 (457)
P4113	13	30.25 (768)	41.63 (1057)	31.88 (809)	19.19 (487)
P4114	14	32.62 (828)	44.00 (1117)	34.25 (869)	20.38 (517)
P4115	15	35.00 (885)	46.38 (1177)	36.62 (930)	21.56 (547)
P4116	16	37.38 (949)	48.75 (1237)	39.00 (990)	22.75 (577)
P4117	17	39.75 (1009)	51.13 (1297)	41.38 (1051)	23.94 (607)
P4118	18	42.12 (1069)	53.50 (1357)	43.75 (1111)	25.12 (637)
P4119	19	44.50 (1130)	55.87 (1417)	46.12 (1171)	26.31 (667)
P4120	20	46.88 (1190)	58.25 (1477)	48.50 (1231)	27.50 (697)
P4121	21	50.12 (1273)	61.63 (1565)	51.88 (1317)	29.19 (741)
P4122	22	52.62 (1336)	64.00 (1625)	54.25 (1377)	30.38 (771)
P4123	23	55.00 (1397)	66.37 (1685)	56.62 (1438)	31.56 (801)
P4124	24	57.38 (1457)	68.75 (1745)	59.00 (1498)	32.75 (831)
P4125	25	59.75 (1517)	71.13 (1805)	61.38 (1559)	33.94 (861)
P4126	26	62.12 (1577)	73.50 (1865)	63.75 (1619)	35.12 (891)
P4127	27	64.50 (1638)	75.87 (1925)	66.12 (1679)	36.31 (921)
P4128	28	66.88 (1698)	78.25 (1985)	68.50 (1739)	37.50 (951)
P4129	29	69.25 (1758)	80.63 (2045)	70.88 (1800)	38.69 (981)
P4130	30	71.62 (1819)	83.00 (2105)	73.25 (1860)	39.88 (1011)

Note: Consult factory if smaller minimum centers, non-standard flanges or other special items are required.

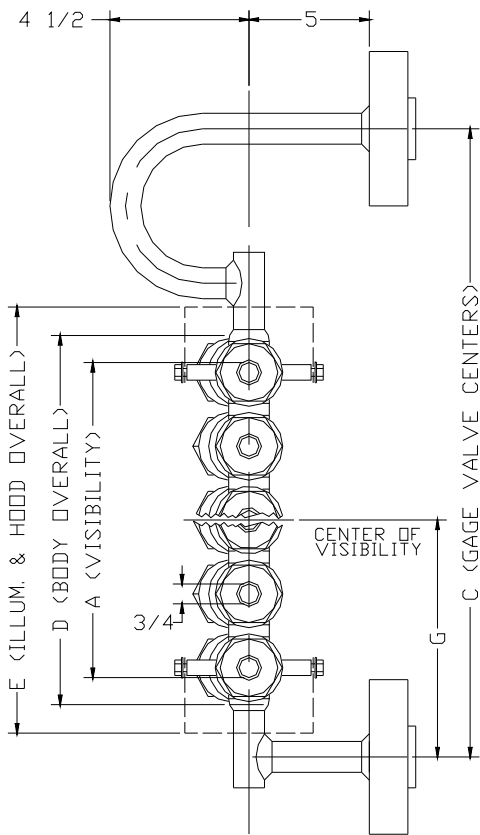
Note to Specifier: The three most important dimensions are: A, B, G and the Viewing Arrangement.

ILLUMINATION REQUIREMENTS

Power Requirements: 120 VAC 240 VAC
Area Classification: Ordinary (non-hazardous)
 Hazardous – Specify: _____

Simpliport 180 Wide Angle LED Illumination
Simpliport 180 Wide Angle LED Illumination (Hazardous Areas – Local Power Supply)
Simpliport 180 Wide Angle LED Illumination (Hazardous Areas – Remote Power Supply)
Optional Mirrors (specify) _____

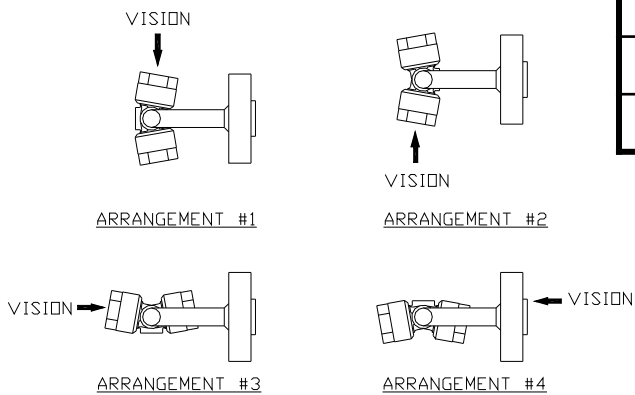
Note: Section I of the ASME Code requires that ported type gages must be fitted with proper illumination to provide visual discrimination between water and steam.



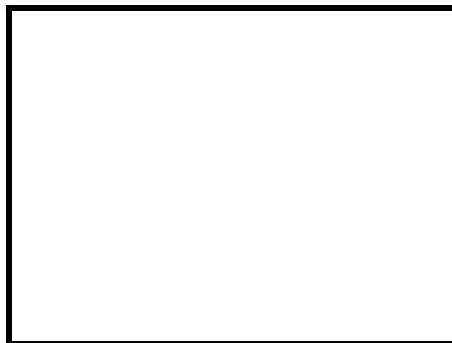
Dimensions Required	
"A" (VISIBILITY):	
"C" (WATER GAGE VALVE CENTERS):	
"G" (CENTER OF VISIBILITY):	

Note: Consult factory if smaller minimum centers, non-standard flanges or other special items are required

Top View Orientation



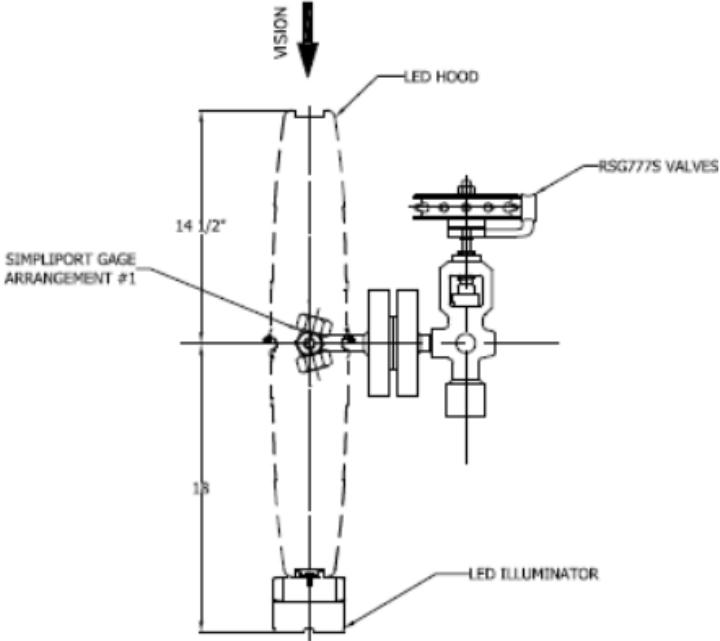
Gage Orientation Required	
SELECT ARRANGEMENT REQUIRED:	
Note: if other please sketch below	



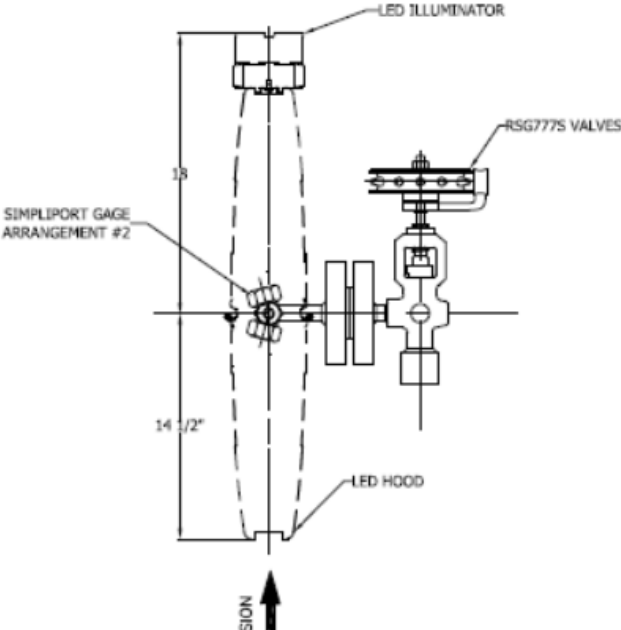
Additional notes:

**Plan View arrangements for SG600 and SG700 Series Valves
(Right Hand Arrangement) with P4100 Series Simpliport Gages**

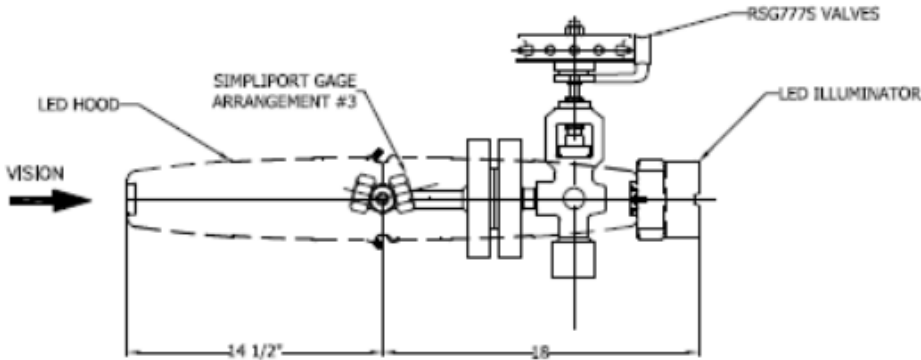
Section: R406.007
Date: 4-30-2020
Supersedes: 11-1-2011
Page 4



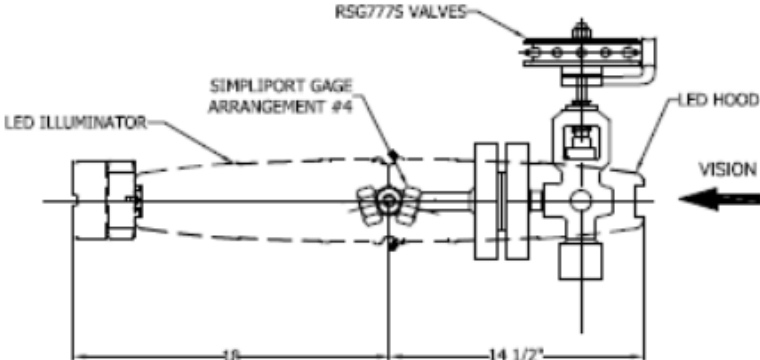
Gage Arrangement #1



Gage Arrangement #2



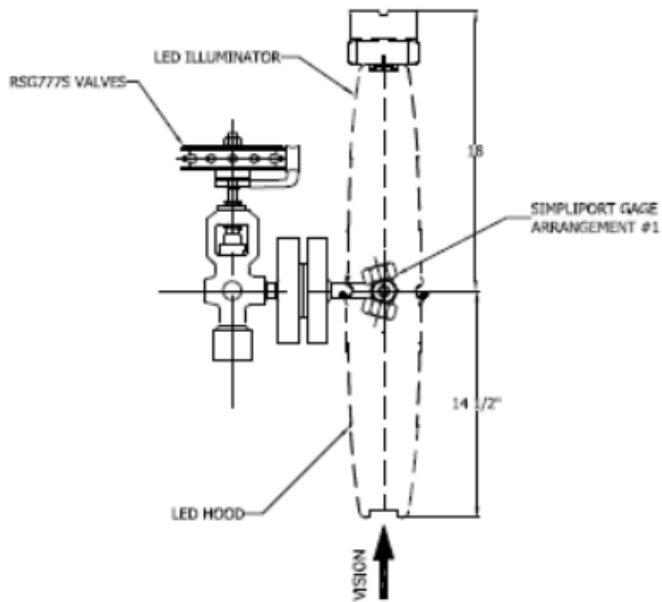
Gage Arrangement #3



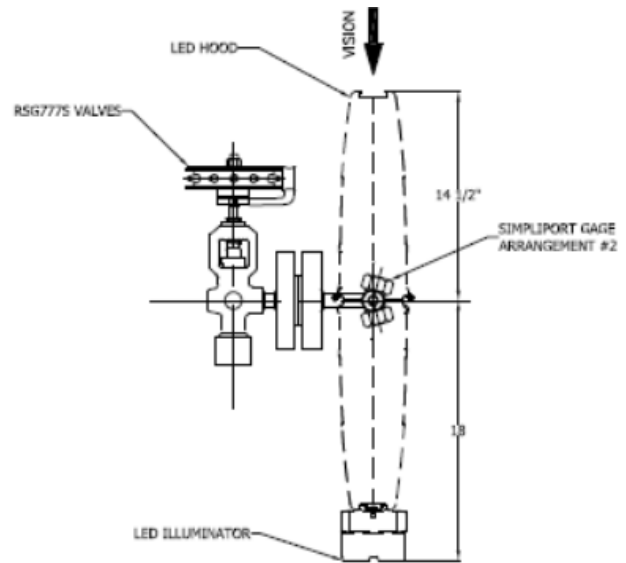
Gage Arrangement #4

Additional notes:

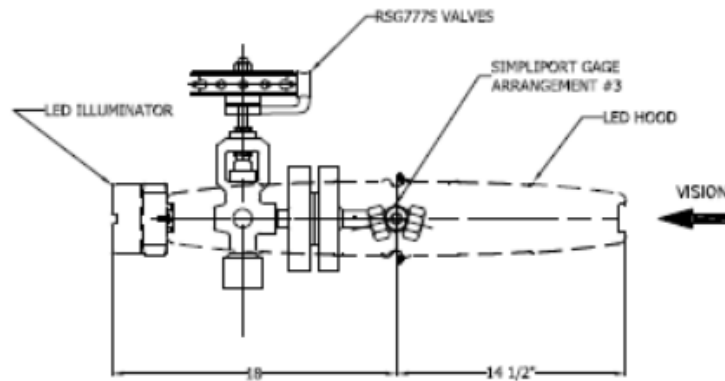
Plan View arrangements for SG600 and SG700 Series Valves
(Left Hand Arrangement) with P4100 Series Simpliport Gages



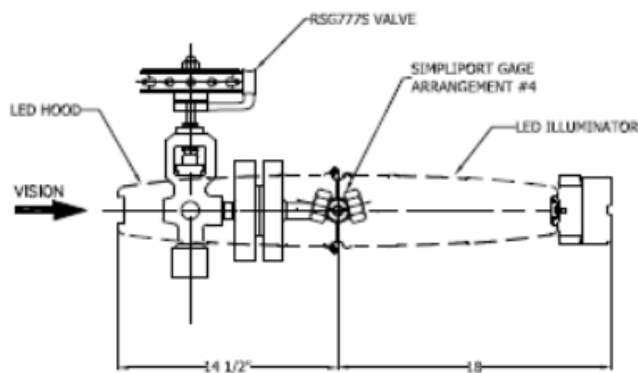
Gage Arrangement #1



Gage Arrangement #2



Gage Arrangement #3



Gage Arrangement #4

Additional notes:
