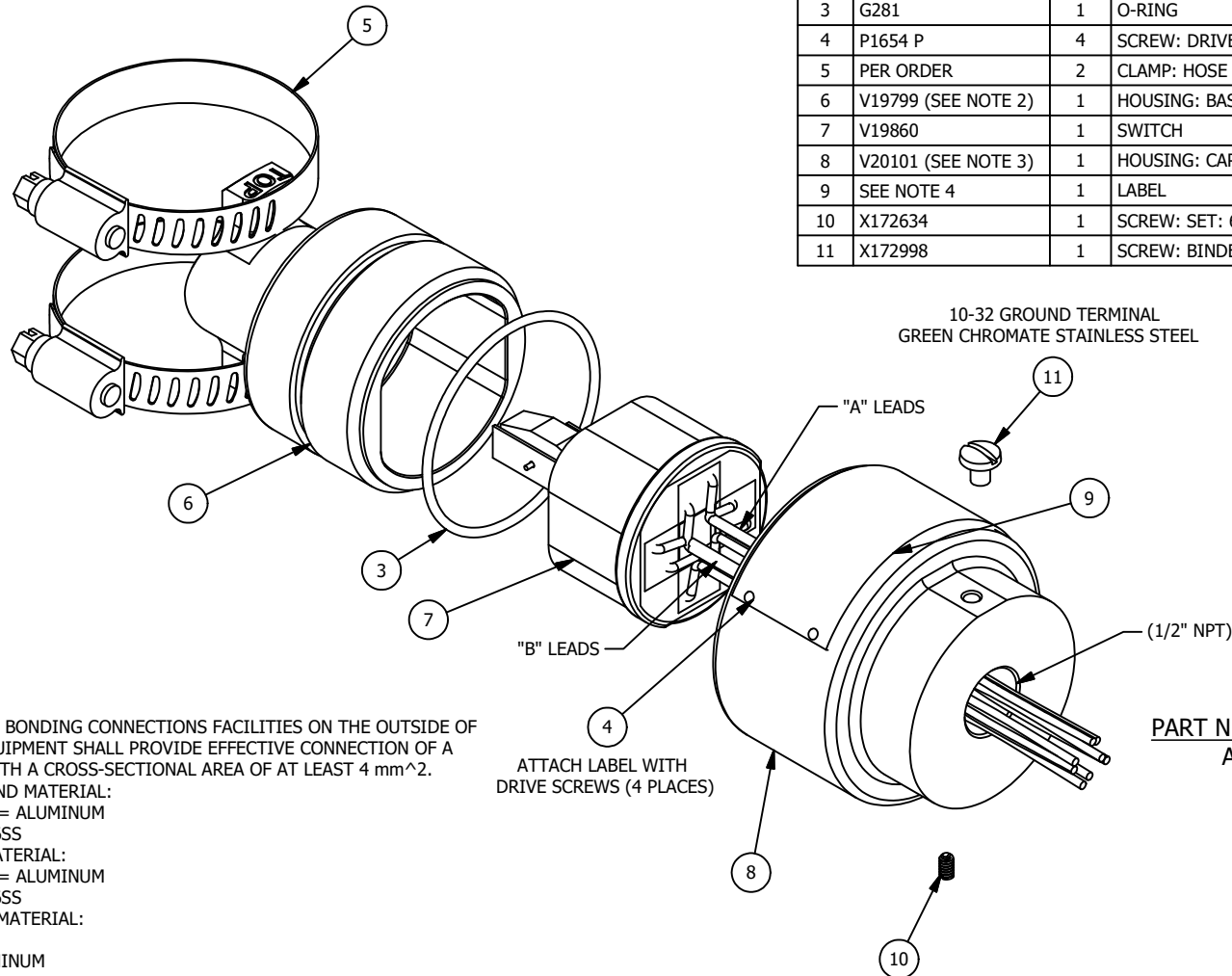


### BILL OF MATERIAL

NO.	PART NO.	QTY.	DESCRIPTION	MATERIAL	REMARKS
1	CI SAS-16	1	CONTROL AND INSTALLATION DRAWING	N/A	NOT SHOWN
2	IOM-M500.28	1	IOM	N/A	NOT SHOWN
3	G281	1	O-RING	BUNA	
4	P1654 P	4	SCREW: DRIVE	STAINLESS STEEL	
5	PER ORDER	2	CLAMP: HOSE	316SS	
6	V19799 (SEE NOTE 2)	1	HOUSING: BASE	SEE NOTE 2	
7	V19860	1	SWITCH	N/A	
8	V20101 (SEE NOTE 3)	1	HOUSING: CAP	SEE NOTE 3	
9	SEE NOTE 4	1	LABEL	SEE NOTE 4	
10	X172634	1	SCREW: SET: 6-32 X 1/4"	316SS	
11	X172998	1	SCREW: BINDER: 10-32 X 1/4"	STAINLESS STEEL	



10-32 GROUND TERMINAL  
GREEN CHROMATE STAINLESS STEEL

**NOTES:**

- EQUIPOTENTIAL BONDING CONNECTIONS FACILITIES ON THE OUTSIDE OF ELECTRICAL EQUIPMENT SHALL PROVIDE EFFECTIVE CONNECTION OF A CONDUCTOR WITH A CROSS-SECTIONAL AREA OF AT LEAST 4 mm<sup>2</sup>.
- HOUSING P/N AND MATERIAL:  
V19799 E6 ANN= ALUMINUM  
V19799 T = 316SS
- CAP P/N AND MATERIAL:  
V20101 E6 ANN= ALUMINUM  
V20101 T = 316SS
- LABEL P/N AND MATERIAL:  
C/US:  
V19861 = ALUMINUM  
V19861 T = 316SS  
V20088 = ALUMINUM (ERNST)  
V20088 T = 316SS (ERNST)  
ATEX/IECEX:  
V20103 = ALUMINUM  
V20103 T = 316SS
- AGENCY CONTROL DRAWING.

ATTACH LABEL WITH  
DRIVE SCREWS (4 PLACES)

**PART NUMBER EXAMPLE:**

A25669 # #

NULL = ALUMINUM  
T = 316SS

NULL = CLASS I, DIV 1, APPROVED (US/CAN)  
CE = ZONE APPROVED (ATEX/IECEX)  
ERNST = CLASS I, DIV 1, APPROVED (US/CAN)

REV	DATE	REVISION	BY
7	3/29/2022	UPDATED COMPANY NAME IN TITLE BLOCK	SH
6	09/29/2020	UPDATED BOM, UPDATED NOTES, COMBIND DRAWINGS, UPDATED SHEET FORMAT	SH
5	N/A	NO REVISION HISTORY	N/A

MANUFACTURED BY  
**Clark-Reliance®**  
16633 FOLTZ PARKWAY  
STRONGSVILLE, OH 44149 USA  
(440) 572-1500 | www.clarkreliance.com  
© Clark-Reliance® LLC. All Rights Reserved.

ASSEMBLY: SWITCH: SAS-16

**JERGUSON®**

<b>DRAWN: DMB</b>	<b>DRAWING NO.:</b>	<b>REV.:</b>
<b>CHECKED: SRM</b>	<b>A-25669</b>	<b>7</b>
<b>DATE: 4/14/2014</b>		
<b>CDC: 7 : 22-094; SH: 03/29/2022</b>		<b>TOLERANCES (U.O.M.):</b>
<b>MATERIAL: PER ORDER</b>		3 Decimal Places: ± .015"
<b>PART NUMBER:</b>		2 Decimal Places: ± .030"
<b>SEE PART NUMBER EXAMPLE</b>		Fractions: ± .015"
		Machined Holes: ± .005"
		Angles: ± 1°
		Finish Marks: < .125 RMS (See PES-004 for details.)