

GENERAL WARNINGS AND NOTES:

- 1) ALL NATIONAL AND LOCAL CODES AND REGULATIONS MUST BE ADHERED TO WHEN INSTALLING THE SWITCH.

INSTALLATION:

- 1) INSPECT SWITCH FOR DAMAGE PRIOR TO INSTALLING.
- 2) TO MOUNT THE SAS-16 SWITCH, TIGHTEN THE PROVIDED HOSE CLAMPS AROUND BOTH THE MOUNTING BRACKET EARS AND MAGNicator II CHAMBER. THE SET POINT MAY BE CHANGED BY SIMPLY LOOSENING THE CLAMPS AND SLIDING THE SWITCH TO THE DESIRED LEVEL.
NOTE: THE "T" OR "TOP" MUST BE VISIBLE FROM THE TOP VIEW OF THE SWITCH FOR THE SWITCH TO BE IN ITS CORRECT ORIENTATION.
- 3) COPY OF SPECIFIC NAMEPLATE INFORMATION WILL ACCOMPANY THE PRODUCT.

MAINTENANCE, REPAIR AND TROUBLESHOOTING:

- 1) WARNING: TO PREVENT THE IGNITION OF HAZARDOUS ATMOSPHERES, KEEP ASSEMBLY TIGHTLY CLOSED WHEN IN OPERATION. CONDUIT RUNS MUST HAVE A SEALING FITTING WITHIN 18" (457mm) OF ENCLOSURE. DISCONNECT FROM POWER SUPPLY CIRCUIT BEFORE OPENING.
ATTENTION: POUR PRÉVENIR L'INFLAMMATION DES ATMOSPHÈRES DANGEREUSES, GARDER L'ENSEMBLE BIEN FERMÉ EN FONCTIONNEMENT. LES CONDUITS DOIVENT ÊTRE MUNIS D'UN RACCORD D'ÉTANCHÉITÉ À MOINS DE 45 CM DE L'ENCEINTE. DÉBRANCHER LE CIRCUIT D'ALIMENTATION AVANT L'OUVERTURE.
- 2) PERIODICALLY INSPECT FOR ANY DAMAGE OR IMPROPER OPERATION.
- 3) THERE IS NO INTERNAL MAINTENANCE OR ADJUSTMENTS REQUIRED ON THE SWITCH. IT IS RECOMMENDED THAT THE SWITCH ENCLOSURE NOT BE OPENED OR DISMANTLED.
- 4) CONTACT FACTORY SHOULD THE SWITCH FAIL.

SPECIFIC CONDITIONS OF USE:

- 1) THE SUPPLY ENTRY OF MODELS A25569-#, A26617-#, A26044-##-# SHALL BE COMPLETED WITH AN APPROVED CLASS 1, DIV 1 SEALING FITTING WITHIN 18" (457mm) OF THE ENCLOSURE OR AN APPROVED CLASS 1, DIV 1 CABLE GLAND AND/OR RIGID METAL CONDUIT, AS APPLICABLE.
- 2) ONLY ONE THREAD ADAPTER SHALL BE USED WITH EACH THREADED ENTRY ON THE ASSOCIATED EQUIPMENT.

PARAMETER

SWITCH RATINGS

MAX AC RATINGS:
MAX DC RATINGS:
MAX AC RATINGS, GOLD CONTACTS:
MAX DC RATINGS, GOLD CONTACTS

SPECIFICATION

300 VAC, 10A, 2000VA
240 VDC, 10A, 50W
240VAC, 1/4A, 6VA
240VDC, 1/4A, 3.6W

FIELD INSTALLATION:

MOUNTING:
WIRING:

ON SIDE OF MAGNETIC LEVEL GAGE VIA HOSE CLAMPS
MIN 24 AWG/ MAX 10 AWG [Ø.51mm/Ø2.59mm]

AGENCY APPROVAL:

US/CAN

CLASS I, DIV 1, GROUPS A,B,C,D

REV	DATE	REVISION	BY
2	03/22/2022	ADDED SHEET 2, SAS-16 W/ JUNCTION BOX	SH
1	10/04/2021	ADDED GOLD CONTACT RATINGS. REMOVED SHEET 2	SH
0	04/30/2021	NEW RELEASE	SH

- NOTES:
- 1) A25669 SHOWN.
 - 2) AGENCY CONTROLLED DOCUMENT.

MANUFACTURED BY

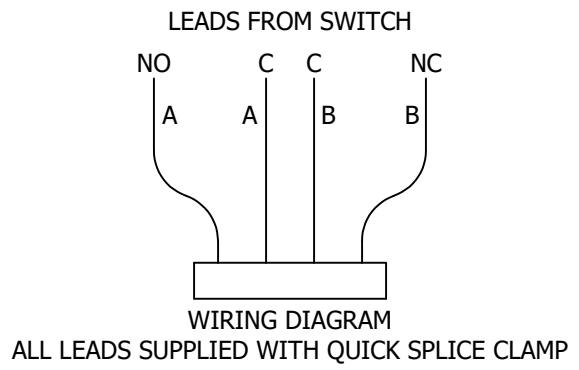
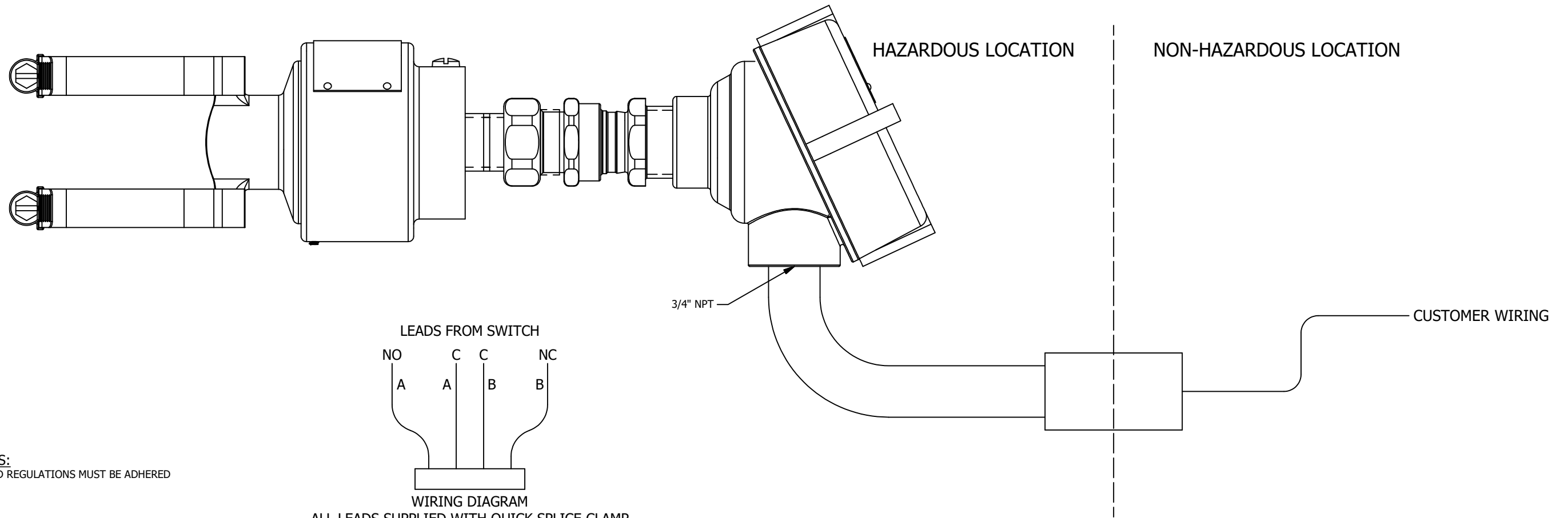
 16633 FOLTZ PARKWAY
 STRONGSVILLE, OH 44149 USA
 (440) 572-1500 | www.clarkreliance.com
 © Clark-Reliance® LLC. All Rights Reserved.

CONTROL AND INSTALLATION DRAWING: SAS-16

SHEET 1 OF 2

JERGUSON®

DRAWN: SH	DRAWING NO.:	REV.:
CHECKED: SRM	CI-SAS-16	2
DATE: 4/30/2021		
CDC: 2 : 22-094: SH: 03/29/2022		TOLERANCES (U.O.N.):
MATERIAL: N/A		3 Decimal Places: N/A
PART NUMBER: CI SAS 16		2 Decimal Places: N/A
		Fractions: N/A
		Machined Holes: N/A
		Angles: N/A
		Finish Marks: N/A
		(See PES-004 for details.)



GENERAL WARNINGS AND NOTES:

- 1) ALL NATIONAL AND LOCAL CODES AND REGULATIONS MUST BE ADHERED TO WHEN INSTALLING THE SWITCH.

INSTALLATION:

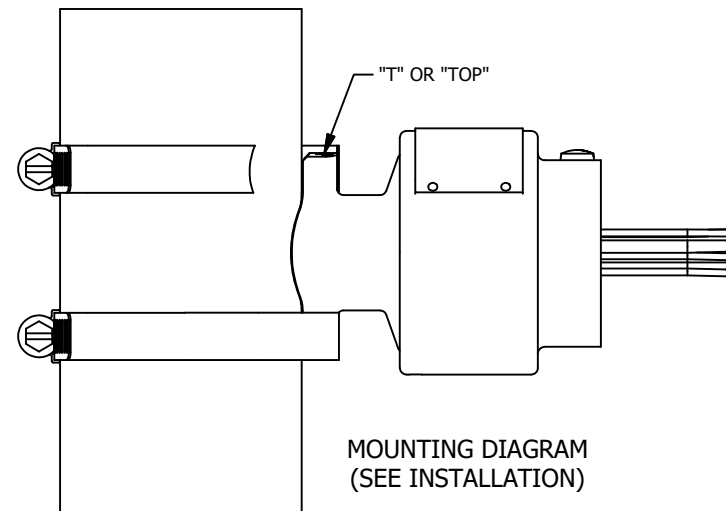
- 1) INSPECT SWITCH FOR DAMAGE PRIOR TO INSTALLING.
- 2) TO MOUNT THE SAS-16 SWITCH, TIGHTEN THE PROVIDED HOSE CLAMPS AROUND BOTH THE MOUNTING BRACKET EARS AND MAGNIFICATOR II CHAMBER. THE SET POINT MAY BE CHANGED BY SIMPLY LOOSENING THE CLAMPS AND SLIDING THE SWITCH TO THE DESIRED LEVEL.
NOTE: THE "T" OR "TOP" MUST BE VISIBLE FROM THE TOP VIEW OF THE SWITCH FOR THE SWITCH TO BE IN ITS CORRECT ORIENTATION.
- 3) COPY OF SPECIFIC NAMEPLATE INFORMATION WILL ACCOMPANY THE PRODUCT.

MAINTENANCE, REPAIR AND TROUBLESHOOTING:

- 1) WARNING: TO PREVENT THE IGNITION OF HAZARDOUS ATMOSPHERES, KEEP ASSEMBLY TIGHTLY CLOSED WHEN IN OPERATION. CONDUIT RUNS MUST HAVE A SEALING FITTING WITHIN 18" (457mm) OF ENCLOSURE. DISCONNECT FROM POWER SUPPLY CIRCUIT BEFORE OPENING.
ATTENTION: POUR PRÉVENIR L'INFLAMMATION DES ATMOSPHÈRES DANGEREUSES, GARDER L'ENSEMBLE BIEN FERMÉ EN FONCTIONNEMENT. LES CONDUITS DOIVENT ÊTRE MUNIS D'UN RACCORD D'ÉTANCHÉITÉ À MOINS DE 45 CM DE L'ENCEINTE. DÉBRANCHER LE CIRCUIT D'ALIMENTATION AVANT L'OUVERTURE.
- 2) PERIODICALLY INSPECT FOR ANY DAMAGE OR IMPROPER OPERATION.
- 3) THERE IS NO INTERNAL MAINTENANCE OR ADJUSTMENTS REQUIRED ON THE SWITCH. IT IS RECOMMENDED THAT THE SWITCH ENCLOSURE NOT BE OPENED OR DISMANTLED.
- 4) CONTACT FACTORY SHOULD THE SWITCH FAIL.

SPECIFIC CONDITIONS OF USE:

- 1) THE SUPPLY ENTRY OF MODELS A25569-#, A26617-#, A26044-##-# SHALL BE COMPLETED WITH AN APPROVED CLASS 1, DIV 1 SEALING FITTING WITHIN 18" (457mm) OF THE ENCLOSURE OR AN APPROVED CLASS I, DIV 1 CABLE GLAND AND/OR RIDGID METAL CONDUIT, AS APPLICABLE.
- 2) ONLY ONE THREAD ADAPTER SHALL BE USED WITH EACH THREADED ENTRY ON THE ASSOCIATED EQUIPMENT.



MOUNTING DIAGRAM
(SEE INSTALLATION)

PARAMETER	SPECIFICATION
SWITCH RATINGS	
MAX AC RATINGS:	300 VAC, 10A, 2000VA
MAX DC RATINGS:	240 VDC, 10A, 50W
MAX AC RATINGS, GOLD CONTACTS:	240VAC, 1/4A, 6VA
MAX DC RATINGS, GOLD CONTACTS:	240VDC, 1/4A, 3.6W
FIELD INSTALLATION:	
MOUNTING:	ON SIDE OF MAGNETIC LEVEL GAGE VIA HOSE CLAMPS
WIRING:	MIN 24 AWG/ MAX 10 AWG [Ø.51mm/Ø2.59mm]
AGENCY APPROVAL:	
US/CAN	CLASS I, DIV 1, GROUPS B,C,D

- NOTES:
 1) A26044 SHOWN
 2) AGENCY CONTROLLED DOCUMENT.

MANUFACTURED BY 16633 FOLTZ PARKWAY STRONGSVILLE, OH 44149 USA (440) 572-1500 www.clarkreliance.com © Clark-Reliance® LLC. All Rights Reserved.	CONTROL AND INSTALLATION DRAWING: SAS-16 SHEET 2 OF 2		DRAWN: SH CHECKED: SRM DATE: 4/30/2021 CDC: 2: 22-094: SH: 03/29/2022 MATERIAL: N/A	DRAWING NO.: CI-SAS-16	REV.: 2
				PART NUMBER: CI SAS 16	<small>TOLERANCES (U.O.N.): 3 Decimal Places: N/A 2 Decimal Places: N/A Fractions: N/A Machined Holes: N/A Angles: N/A Finish Marks: N/A (See PES-004 for details.)</small>